

# SPARE PARTS SECTION

## Round Jaw Shrinker Stretcher

Model. SHST1.6HR

Order Code S2267

EDITION No : SHST1.6HR-1

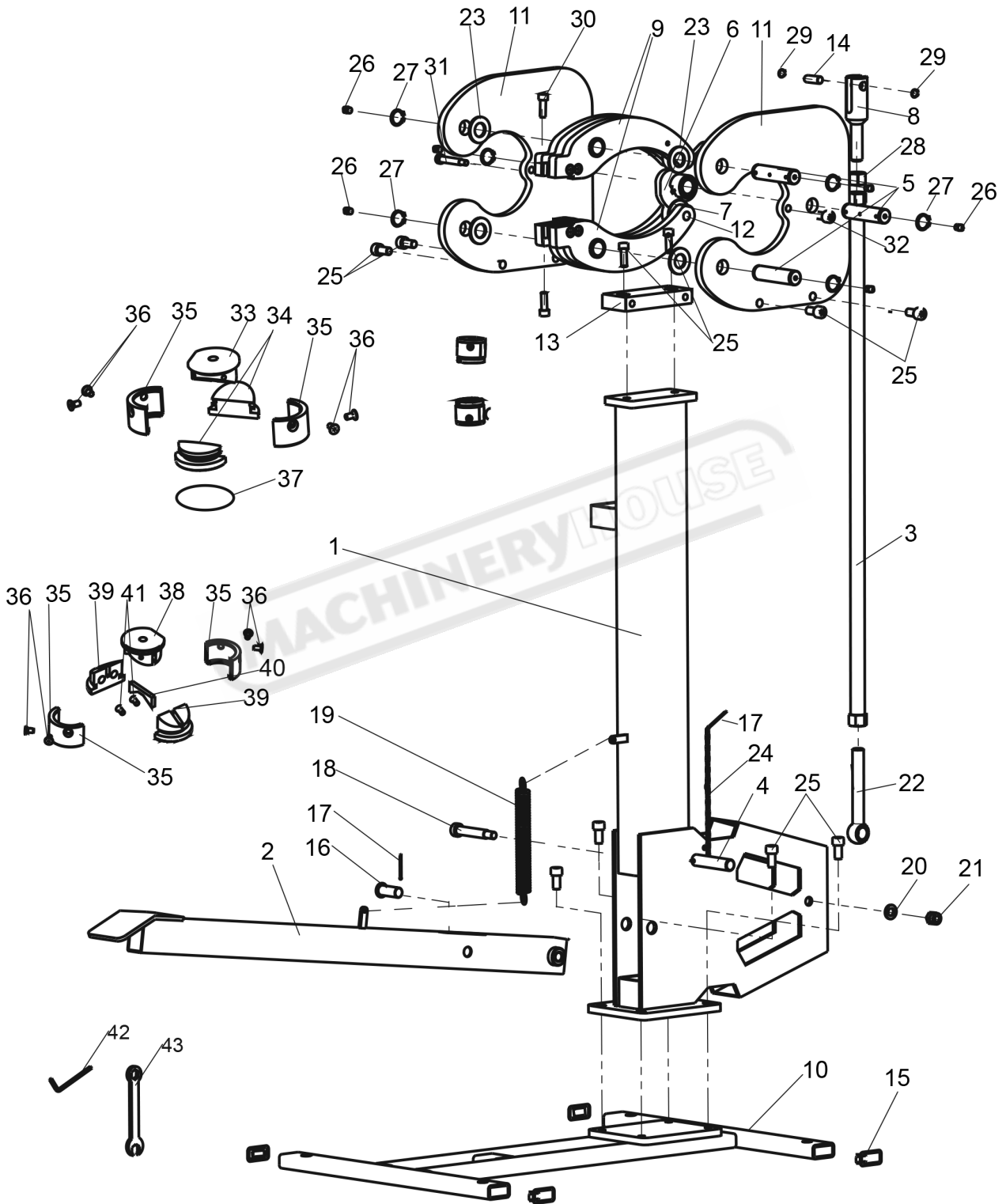
DATE OF ISSUE : 10/2022

The following section covers the spare parts diagrams and lists that were current at the time this manual was originally printed. Due to continuous improvements of the machine, changes may be made at any time without notification.

### HOW TO ORDER SPARE PARTS

1. Have your machines model number, serial number & date of manufacture on hand, these can be found on the specification plate mounted on the machine
2. A scanned copy of your parts list/diagram with required spare part/s identified
3. Go to [www.machineryhouse.com.au/contactus](http://www.machineryhouse.com.au/contactus) and fill out the inquiry form attaching a copy of scanned parts list.

**SPARE PARTS DIAGRAM**



**SPARE PARTS LIST**

Item	DESCRIPTION	Qty	Item	DESCRIPTION	Qty
1	Frame	1	23	Washer	1
2	Footplate Bar	1	24	Chain	1
3	Bar	1	25	Screw M10X20	10
4	Pin 16mm	1	26	Lubricating Nipple	6
5	Shaft	3	27	C-Ring 20mm	6
6	Driving Wheel	1	28	Nut M16	1
7	Driven Wheel	2	29	C-Ring 12mm	2
8	Connecting Bolt	1	30	Screw M8X25	2
9	Jaw Base	2	31	Screw	1
10	Stand	1	32	Screw	1
11	Side Support	2	33	Stretcher V-Block	2
12	Pin	2	34	Stretcher Jaw	4
13	Plate	1	35	Jaw Cover	8
14	Shaft	1	36	Screw	16
15	Cover	4	37	Round Spring	2
16	Pin	1	38	Shrinker V-Block	2
17	Split Pin	3	39	Shrinker Jaw	4
18	Bolt	1	40	Guide Plate	2
19	Spring	1	41	Spring	4
20	Washer	1	42	Wrench 8mm	1
21	Nut M10	1	43	Wrench	1
22	Bolt M16x120	1			

NOTE: SOME INDIVIDUAL PARTS MAY ONLY BE AVAILABLE AS AN ASSEMBLY

**WARNING**

*Always disconnect the power to the machine before servicing or doing maintenance to the machine.*